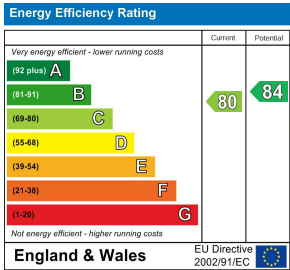


Chobham Gardens  
Wimbledon Common, SW19 6HA

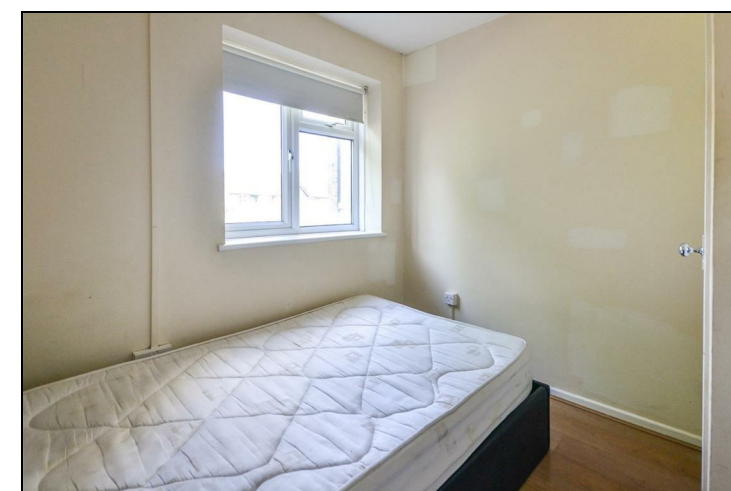
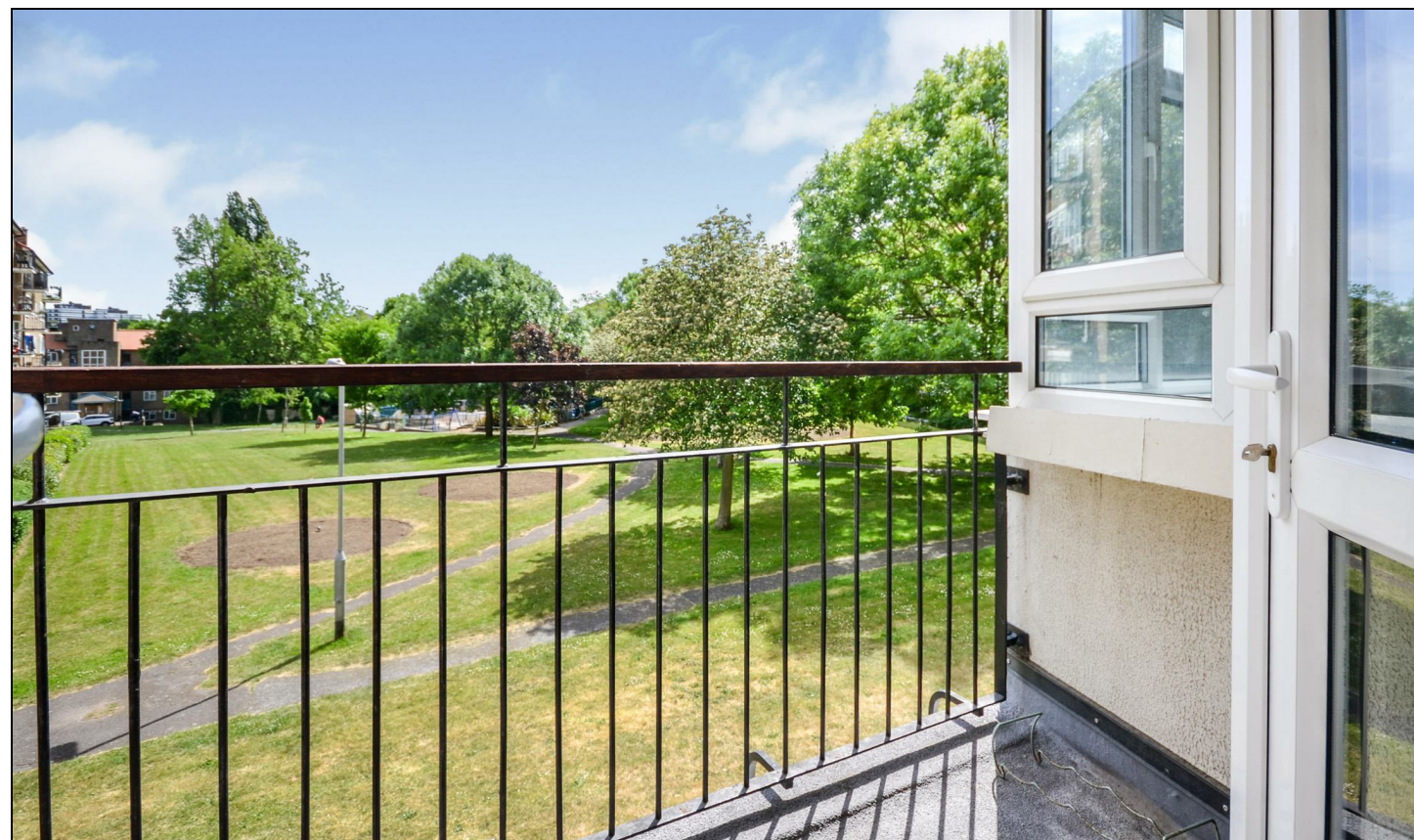


£2,400 PCM:

FOUR DOUBLE BEDROOM FLAT WITH BALCONY



FOUR DOUBLE BEDROOM purpose built flat with PRIVATE BALCONY located within walking distance of Southfields underground (District line zone 3), and easy access to Putney, Wimbledon Village and the A3. The property benefits from a lift to the building, wood laminate flooring, spacious reception room with balcony, four good size bedrooms, and GREAT BUILT IN STORAGE. Ideal either for sharers or a family. Free parking available on a first come basis on the development. EPC band C. Wandsworth Council Tax Band C.



### SPECIFICATION:

- Spacious reception room
- Private balcony
- Lots of built in storage
- Great size bedrooms
- Free parking available on a first come basis
- First months advance rent
- Damages deposit = 5 weeks rent
- Holding deposit = one weeks rent
- EPC band C
- Wandsworth council tax band C